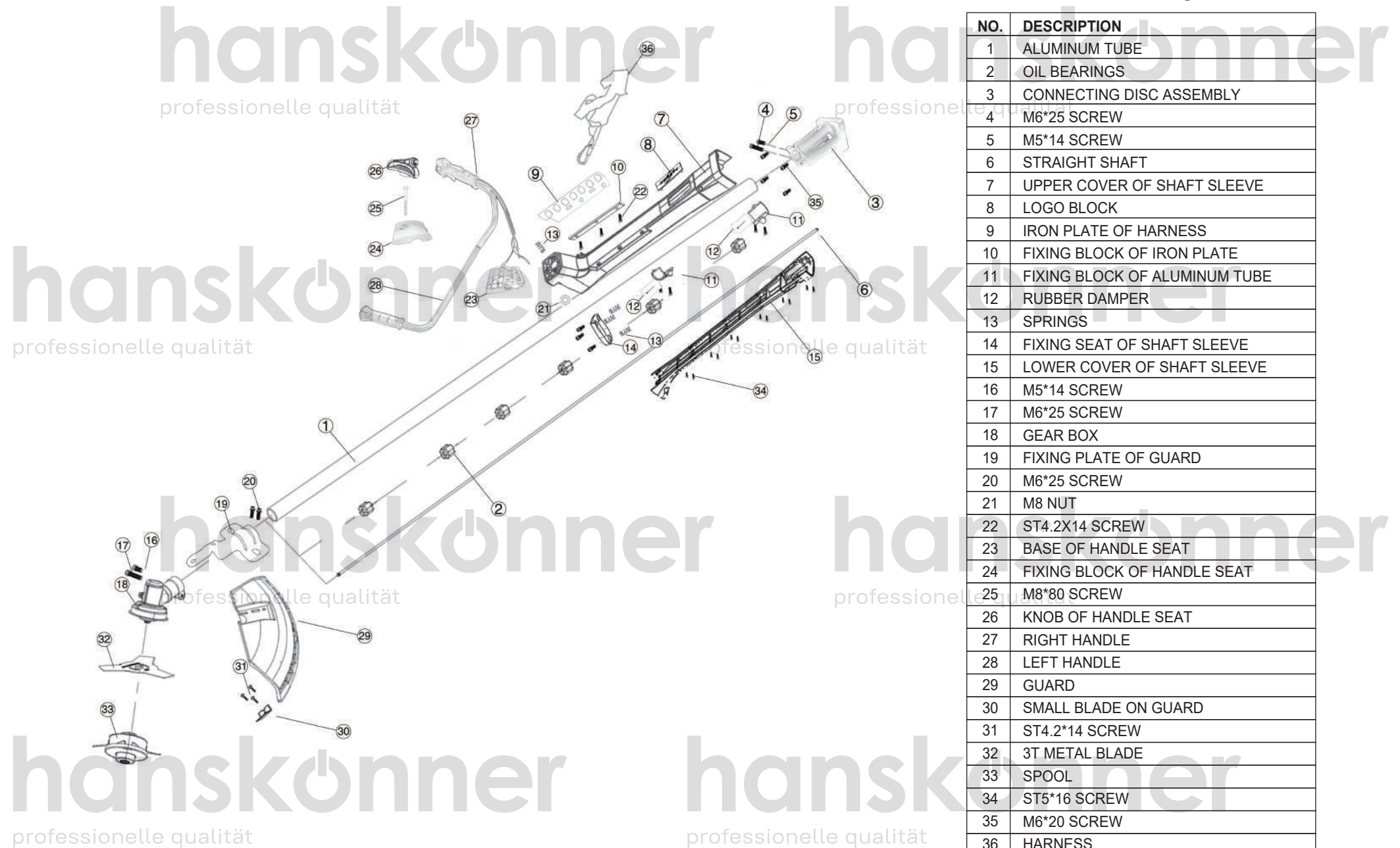
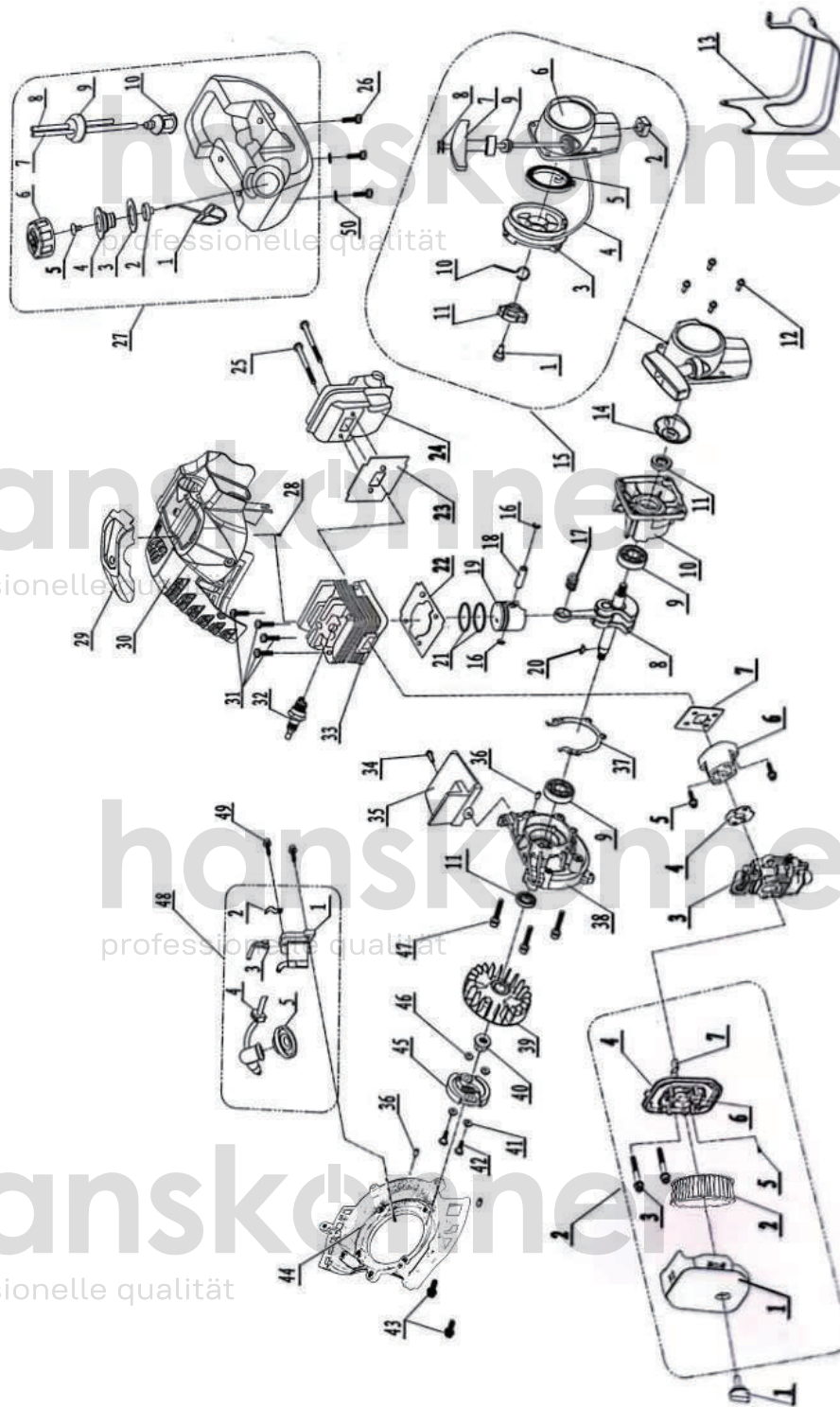


HBT126D



NO.	DESCRIPTION
1	ALUMINUM TUBE
2	OIL BEARINGS
3	CONNECTING DISC ASSEMBLY
4	M6*25 SCREW
5	M5*14 SCREW
6	STRAIGHT SHAFT
7	UPPER COVER OF SHAFT SLEEVE
8	LOGO BLOCK
9	IRON PLATE OF HARNESS
10	FIXING BLOCK OF IRON PLATE
11	FIXING BLOCK OF ALUMINUM TUBE
12	RUBBER DAMPER
13	SPRINGS
14	FIXING SEAT OF SHAFT SLEEVE
15	LOWER COVER OF SHAFT SLEEVE
16	M5*14 SCREW
17	M6*25 SCREW
18	GEAR BOX
19	FIXING PLATE OF GUARD
20	M6*25 SCREW
21	M8 NUT
22	ST4.2X14 SCREW
23	BASE OF HANDLE SEAT
24	FIXING BLOCK OF HANDLE SEAT
25	M8*80 SCREW
26	KNOB OF HANDLE SEAT
27	RIGHT HANDLE
28	LEFT HANDLE
29	GUARD
30	SMALL BLADE ON GUARD
31	ST4.2*14 SCREW
32	3T METAL BLADE
33	SPOOL
34	ST5*16 SCREW
35	M6*20 SCREW
36	HARNESS

ENGINE FOR HBT126D



NO.	DESCRIPTION	NO.	DESCRIPTION
1	NUT	25	SCREW
2	AIR FILTER ASSY	26	SCREW
2-1	AIR FILTER COVER	27	TANK
2-2	SPONGE	27-1	CAP TETAINDER
2-3	SCREW	27-2	RACQUET
2-4	CARBURETOR HOLDER	27-3	SEALING RING
2-5	SCREW	27-4	CHECK VALVE SEAT
2-6	CHOKE	27-5	CHECK VALVE
2-7	CHOKE HANDLE	27-6	OIL CAP
3	CARBURETOR	27-7	INTO PIPE
4	GASKET	27-8	RETURN PIPE
5	SCREW	27-9	TUBE SEAT
6	INLET PIPE	27-10	FUEL FILTER
7	GASKET	28	SCREW
8	CRANKSHAFT ASSY	29	TOP COVER
9	BEARING6001	30	ENGINE COVER
10	RIGHTCRANKSHAFT CASE	31	SCREW
11	OIL SEAL12*22*7	32	SPARK PLUG
12	SCREW	33	CYLINDER
13	TANK PROTECTOR	34	SCREW
14	DRIVING PLATE	35	SHIELD
15	STARTER ASSY	36	PIN
15-1	SCREW	37	GASKET
15-2	NUT	38	LEFT CRANKSHAFT CASE
15-3	WHEEL	39	FLYING WHEEL
15-4	ROPE	40	NUT
15-5	SPRING	41	SHIM
15-6	COVER	42	SCREW
15-7	HANDLE	43	SCREW
15-8	ROPE CLAMP	44	SIDE COVER
15-9	ROPE SLEEVE	45	CLUTCH ASSY
15-10	SMALL SRPRING	46	SHIM
15-11	CLAW	47	SCREW
16	PISTON PIN RING	48	COIL ASSY
17	BEARING	48-1	COIL
18	PISTON PIN	48-2	CORD GASKET
19	PISTON	48-3	OFF LINE
20	WOODRUFF KEY	48-4	CORD GROMMET
21	PISTON RING	48-5	SPARK PLUG CAP
22	GASKET	49	SCREW
23	GASKET	50	WASHER
24	MUFFLER		